



Panton 165C



Panton Orange 021C

打样要求

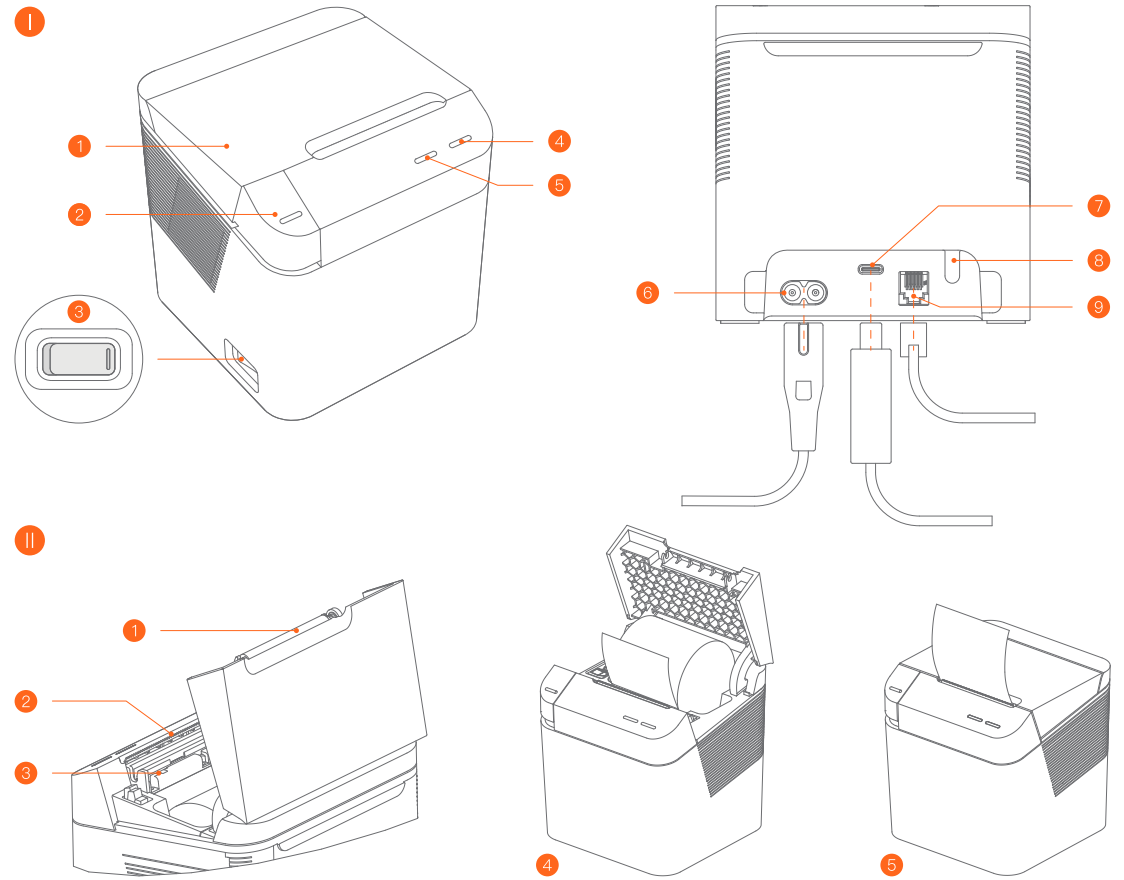
尺寸：165*135mm

材质：105g哑粉

印刷：70%黑+2专

工艺：风琴折（封面：型号页；封底：料号页）

环保要求：ROHS



快速入门指南

I 打印机简介

1 门盖

2 门盖按键

用于打开门盖，安装/更换打印卷纸；按下门盖按键，门盖自动弹开。

3 电源开关

用于控制打印机电源开关；按下“|”表示开启打印机，按下“无标识”表示关闭打印机。

4 电源指示灯

指示电源的开关状态：蓝灯亮，打印机通电；蓝灯灭，打印机断电。

5 异常指示灯

指示打印机的各种异常状态；正常情况下，异常指示灯不亮；打印机处于异常状态下，告警指示灯红灯闪烁。

6 AC电源接口

将电源线连接至电源接口；将电源线另一头插入市电插座。连接电源线时注意打印机处于关机状态。

7 Type C接口

连接POS机实现USB数据通讯。

8 走纸按键

按下走纸按键然后打开电源开关，打印机将打印自检页；正常情况下，短按走纸按键，每按下一次，打印机进纸一行；长按走纸按键，打印机连续走纸；错误状态下，按下走纸按键，打印机无动作。

9 钱箱接口

连接钱箱，驱动钱箱开锁，本设备只支持外接12V/1A钱箱，请注意钱箱电性能参数。连接钱箱时注意打印机处于关机状态。

II 打印机功能简介

1 打印胶棍

2 打印组件

缺纸传感器位于打印组件中，用于检测有纸/无纸。

3 撕纸刀

用于辅助撕开打印纸，撕纸刀锋利，请勿触碰！

4 纸卷安装

- 1、打开打印机翻盖
 - 2、如图方向放入打印机纸卷
 - 3、盖上打印机翻盖
- 注意：打印空白时，请确认纸卷安装方向是否正确

5 打印机自检

确认打印机已安装纸卷，并且上盖闭合；先按住走纸按键，再打开电源开关；然后释放走纸按键，打印机将打印自检样张。

注意事项

安全警告

- 请将交流电插头插入与打印机上标识输入相对应的交流电插座中；
- 严禁在存有任何潜在爆炸性气体的场合使用；
- 非专业人员不要随意拆开打印机，以免发生危险；
- 此为A级产品。在生活环境中，该产品可能会造成无线电干扰。在这种情况下，可能需要用户对于干扰采取切实可行的措施。

重要安全说明

- 避免在雷电期间安装或使用，否则有被雷击的危险；
- 当您发现有异常气味，过热或烟雾情形下，请立即切断电源；
- 撕纸刀较锋利，请勿触碰！
- 避免在潮湿的环境下使用；避免在粉尘或易燃易爆的场合使用。
- 在未获允许的情况下，不要在医疗设备附近使用。

建议

- 不要在靠近水或潮湿环境中使用，避免液体落入终端中
- 不要在极端冷、热环境中使用，例如靠近火源或点燃的香烟
- 不要摔、投掷或弯折
- 尽量在清洁无尘环境中使用，避免细小物品落入终端中；

基本参数

打印方式	行式热敏
分辨率	203 × 203DPI
有效打印宽度	Max.48mm
打印速度	Max.160mm/s
尺寸	116x116x116mm
机器重量	约796g
Flash	容量：4M 字库：默认支持(GB18030+英文)
RAM	容量：64KB
Flash LOGO	下载缓冲区大小：512KB
RAM LOGO	下载缓冲区大小：4KB
1D	Code 39, Code 93, Code 128, Codabar, Interleave 2 of 5, EAN-8, EAN-13, EAN-128, UPC-A, UPC-E, EAN/UPC (含2位或5位追加码)
2D	QR
通信接口	Type-C USB接口
通信协议	USB 2.0
操作温湿度	温度：0℃~50℃，湿度：30%~85% 无凝露
存储温湿度	温度：-20℃~60℃，湿度：10%~90% 无凝露

人机接口	电源键 蜂鸣器 功能按键 电源指示灯 告警指示灯
钱箱接口	类型：RJ12 输出电压：12V 输出电流：1.0A (MAX) 1路控制
传感器	缺纸探测 电源电压探测 打印头坏点探测 打印头温度探测
纸张类型	连续热敏纸
纸卷外径	Max.Φ60mm
纸张厚度	0.051~0.068mm
出纸方式	前出纸/上出纸
输入电源规格	交流：110V~240V/ 50~60Hz/0.8A MAX

包装内容

- ☑ 主机1台
- ☑ 用户指南1张（包含包装内容、产品保修卡、产品合格证）
- ☑ 电源线1条
- ☑ USB连接线1条
- ☑ 热敏打印纸1卷

常见故障排除

打印机出现故障时，可参照本章进行相应的处理。如果仍然无法排除故障，请与代理商或厂家联系。

故障症状	可能的原因	解决方法
指示灯不亮，打印机不工作	打印机没有通电	连接打印机电源
	打印机电源开关没有打开	打开打印机电源开关
	电源线损坏	更换电源线
	线路板损坏	与经销商或厂家联系
异常指示灯闪烁	纸尽	安装新纸卷
	输入电压异常	关闭打印机电源，检查输入电压
	打印头过热	等待散热后自动恢复正常打印
	打印机出现严重故障	与经销商或厂家联系
打印内容淡不清晰或有污点	打印头损坏	更换打印机芯
	打印头或进纸胶棍脏	清洁打印头或进纸胶棍
打印出空白页面	耗材放反	参考提示放置耗材
纸张不能正常输出	塞纸	打开上盖，检查走纸通道，清除塞纸

注意：

清洗打印头或进纸胶棍时不要用坚硬的物体（如镊子等）划伤打印头和胶棍；为提高打印头使用寿命，建议每月清洗打印头和胶棍，清洗时请使用棉签蘸无水酒精轻轻擦拭打印头发热片。

如需要更多帮助，欢迎随时访问小米官网www.sunmi.com或拨打售后电话400-6666-509

Thermal Pos Printer QUICK START GUIDE NT210

QUICK START GUIDE

I Brief Introduction to the Printer

1 Door cover

2 Key of door cover

Used to open the door cover to install/replace the print paper. The door cover will automatically be bounced off by pressing the key of door cover.

3 Power switch

Used to control the power switch of the printer. Indicate the printer is turned on by pressing "I". Indicate the printer is turned off by pressing "no sign".

4 Power indicator light

Indicate the state of power switch, indicate the printer is powered on when the blue light is on. Indicate the printer is powered off when the blue light is off.

5 Abnormity indicator light

Indicate various abnormal states of the printer; The abnormity indicator light is off under normal circumstances. When the printer is under the abnormal state, red indicator light for alarm will flicker.

6 Power interface

Connecting the power line to the power interface; Insert the other end of the power line into the electric supply socket. Keep the printer under the shutdown state at the moment of connecting with the power line.

7 Type C interface

Connect the POS machine to realize USB data communication.

8 Key of paper skip

The printer will print the self-inspection page after pressing the paper skip key and then turning on the power switch. One-line paper feed of the printer will be realized by short press of the paper skip key once under normal state. Continuous paper feed of the printer will be realized by long press of the paper skip key. No action will occur to the printer by pressing the paper skip key under the wrong state.

9 Interface of cash drawer

Connect the cash drawer and drive the cash drawer to conduct unlocking. The equipment only supports circumscribed 12V/1A cash drawer. Pay attention to electrical performance parameters of the cash drawer. Keep the printer under the shutdown state at the moment of connecting with the cash drawer.

II Introduction to printer functions

1 Print rubber covered roller

2 Printing module

The sensor for lack of paper is in the printing module and used to inspect whether the paper exists or not.

3 Paper knife

Auxiliary rip printing is used and the paper knife is sharp which shall not be touched!

4 Installation of the scroll

1. Open the cover of the printer.
2. Put the printer scroll as per the direction shown in the figure.
3. Cover the printer cover .
Notes: Confirm whether the installation direction of the scroll is correct at the moment of empty printing.

5 Self-inspection of the printer

Confirm the printer has been installed with the scroll and the upper cover is closed. The printer will print the self-inspection sample after pressing the paper skip key and turning on the power switch and then releasing the paper skip key.

Precautions

Safety warnings

- Insert the AC plug into the AC outlet corresponding to the input marked on the printer.
- Forbid use in the presence of any potential explosive gases.
- Laypeople shall not randomly take apart the printer to avoid any danger.
- This is a Class A product. In the living environment, the product may cause radio interference. In such cases, users may be required to take practical measures against interference.

Important safety instructions

- Avoid installation or use during the period when thunder and lightning happen, or the danger of suffering from lightning stroke will arise.
- Immediately cut off the power supply if you find unusual odor, overheating or smog.
- Avoid touching the paper knife which is relatively sharp!
- Avoid use under the humid environment. Avoid use in dusty or flammable explosive occasions.

Suggestions

- Avoid use under the environment near the water or under the humid environment and the liquid entering the terminal.
- Avoid use under the extremely cold or hot environment, such as the place near the combustion source or lighted cigarette.
- Avoid throwing, casting or bending.
- Use under the clean and dust-free environment as far as possible and avoid small items falling into the terminal.
- Avoid use near the medical facility without permission.

Disclaimer

The company will not take the responsibility for the following behavior

- Damages incurred by use and maintenance not under the condition set forth the guide.
- Damage or problem incurred by materials or consumables (not initial product provided by the product or recognized product by the company). (No right of modifying or changing the product without consent from the company).

Some details of the document may be inconsistent with the product because of the product update which shall be subject to the material object. The power of interpretation about the document belongs to the company. Reserve the right of modifying the specification without advance notice.

Basic parameters

Printing way	Linear thermosensitive printing
Resolution	203 × 203DPI
Print width	Max.48mm
Print speed	Max.160mm/s
Size	116x116x116mm
Weight	~796g
Flash	Capacity: 4M Font library: Default support (GB18030 + English)
RAM	Capacity: 64KB
Flash LOGO	Capacity of downloading buffer zone:512KB
RAM LOGO	Capacity of downloading buffer zone:4KB
1D	Code 39, Code 93, Code 128,Codabar, Interleave 2 of 5, EAN-8, EAN-13, EAN-128, UPC-A, UPC-E, EAN/UPC (including 2-digit or 5-digit supplementary code)
2D	QR
Communication interface	Type-C USB interface
Communication protocol	USB 2.0
Operation temperature and humidity	Humidity: 0℃~50℃, Temperaturey: 30%~85% (without condensation)
Storage temperature and humidity	Temperature: -20℃-60℃, Humidity: 10%-90% (without condensation)

Human machine interface	Power key Buzzer Function key Power indicator light Warning indicator light
Interface of cash drawer	Type: RJ12 Output voltage: 12V Output current: 1.0A (MAX) One-circuit control
Sensor	Detection for lack of paper Detection for power voltage Detection for dot defect of the print head Detection for the temperature of the print head
Paper type	Continuous thermo-sensitive paper
External diameter of the scroll	Max.Φ60mm
Paper thickness	0.051~0.068mm
Paper delivery way	Front paper delivery/upper paper delivery
Input power specification	AC: 110V~240V/ 50~60Hz/0.8A MAX

Package Contents

- One host machine
- QUICK START GUIDE
- One power line
- One USB connecting line
- One volume of thermosensitive printing paper

Table for Names and Content Identification of Toxic and Hazardous Substances in this Product

Part Name	Toxic or Hazardous Substances and Elements									
	Pb	Hg	Cd	Cr(VI)	PBB	PBDE	DEHP	DBP	BBP	DIBP
Circuit Board	×	○	○	○	○	○	○	○	○	○
Structural	○	○	○	○	○	○	○	○	○	○
Packaging	○	○	○	○	○	○	○	○	○	○

○: indicates that the content of the toxic and hazardous substance in all homogeneous materials of the component is below the limit specified in SJ/T 11363-2006.

X: indicates that the content of the toxic and hazardous substance in at least one homogeneous material of the component exceeds the limit stipulated in SJ/T 11363-2006. However, as for the reason, because there is no mature and replaceable technology in the industry at present.

The products that have reached or exceeded environmental protection service life should be recycled and reused according to the Regulations on Control and Management of Electronic Information Products, and should not be discarded randomly.

FCC Statement

Any Changes or modifications not expressly approved by the party responsible for compliance could void the user's authority to operate the equipment. This device complies with part 15 of the FCC Rules. Operation is subject to the following two conditions:
(1) This device may not cause harmful interference, and
(2) This device must accept any interference received, including interference that may cause undesired operation.

Manufacturer: Shanghai Sunmi Technology Co.,Ltd.
Address: Room 505, KIC Plaza, No.388 Song Hu Road, Yang Pu District, Shanghai, China

Common Troubleshooting

When the fault occurs to the printer, it shall be disposed based on this Chapter. In case of still failing in trouble clearing, contact with the agent or the manufacturer.

Fault symptom	Possible causes	Solutions
Indicator light does not light; printer does not work	The printer fails to be powered on	Connect the power supply of the printer
	The power switch of the printer fails to be turned on	Turn on the printer power switch
	The power line is damaged	Replace the power line
	The circuit board is damaged	Contact with the dealer or the manufacturer
Abnormity indicator light flickers	No paper	Install new scroll
	The input voltage is abnormal	Turn off the power supply of the printer and inspect the input voltage
	The print head is overheating	Automatically recover normal printing after heat dissipation
	Major failure happens to the printer	Contact with the dealer or the manufacturer
The print content is unclear or with stain	The print head is damaged	Replace the printer core
	The print head or the paper feed rubber covered roller is dirty	Clean the print head or paper feed rubber covered roller
A blank page is printed	The consumable is reversed	Place the consumable as per the prompt
The paper fails to be normally output	Paper plugged	Open the upper over, inspect the paper skip channel and remove the plugged paper

Notes:

Avoid the scratch of the print head and rubber covered roller with hard objects (such as tweezers) at the moment of cleaning the print head or paper feed rubber covered roller.
To improve the service life of the print head, it is suggested that monthly clean the print head and rubber covered roller and slightly scrub the print head heating sheet with the cotton swab dipping in the anhydrous alcohol at the moment of cleaning.

本产品有毒有害物质名称及含量标识表

部件名称	有毒有害物质或元素					
	铅 (Pb)	汞 (Hg)	镉 (Cd)	六价铬 (Cr(VI))	多溴联苯 (PBB)	多溴二苯醚 (PBDE)
电路板组件	×	○	○	○	○	○
打印头组件	○	○	○	○	○	○
结构件	○	○	○	○	○	○
包装件	○	○	○	○	○	○

○: 表示该有毒有害物质在该部件所有均质材料中的含量均在 SJ/T11363-2006规定的限量要求以下。

X: 表示该有毒有害物质至少在该部件的某一均质材料中的含量超出 SJ/T11363-2006规定的限量要求; 但是上表中打“x”的部件, 其含量超出是因为目前业界还没有成熟的可替代的技术。

对达到或超出环保使用年限的产品, 应依据《电子信息产品控制管理办法》规定进行回收再利用, 不应随意丢弃。

免责声明

本公司不对以下行为负责

- 不在本指南说明的条件下使用和维护所造成的损坏;
- 对于因选件或耗材(非本公司提供之最初产品或认可产品)造成的损坏或问题。(未经本公司同意无权进行产品修改或变动)

由于产品的更新, 此文档的某些细节可能与产品不符, 请以实物为准, 此文档的解释权归本公司。保留不预先通知的情况下, 修改本说明书的权利。

制造商: 上海商米科技集团股份有限公司
地址: 上海市杨浦区淞沪路388号创智天地7号楼505室

产品保修卡

产品保修卡

产品名称: _____
产品型号: _____
产品编号: _____
购买日期: _____
保修期限: 自购买之日起, 我公司提供 ____ 天保修服务。

联系方式:
· 公司地址: _____
· 联系电话: _____

以下情况恕不提供免费保修:
· 未经允许擅自拆卸修理的产品。
· 产品条码、易碎贴破损及保修卡涂改、残缺的。
· 未按照说明书的要求操作设备所引起的故障。
· 因进水或跌落而造成的故障、划伤或破损的人为损坏。
· 因不可抗拒因素造成的故障或损坏。
· 保修期限外。

产品合格证

产品合格证

检验合格

6.7.01.0000241